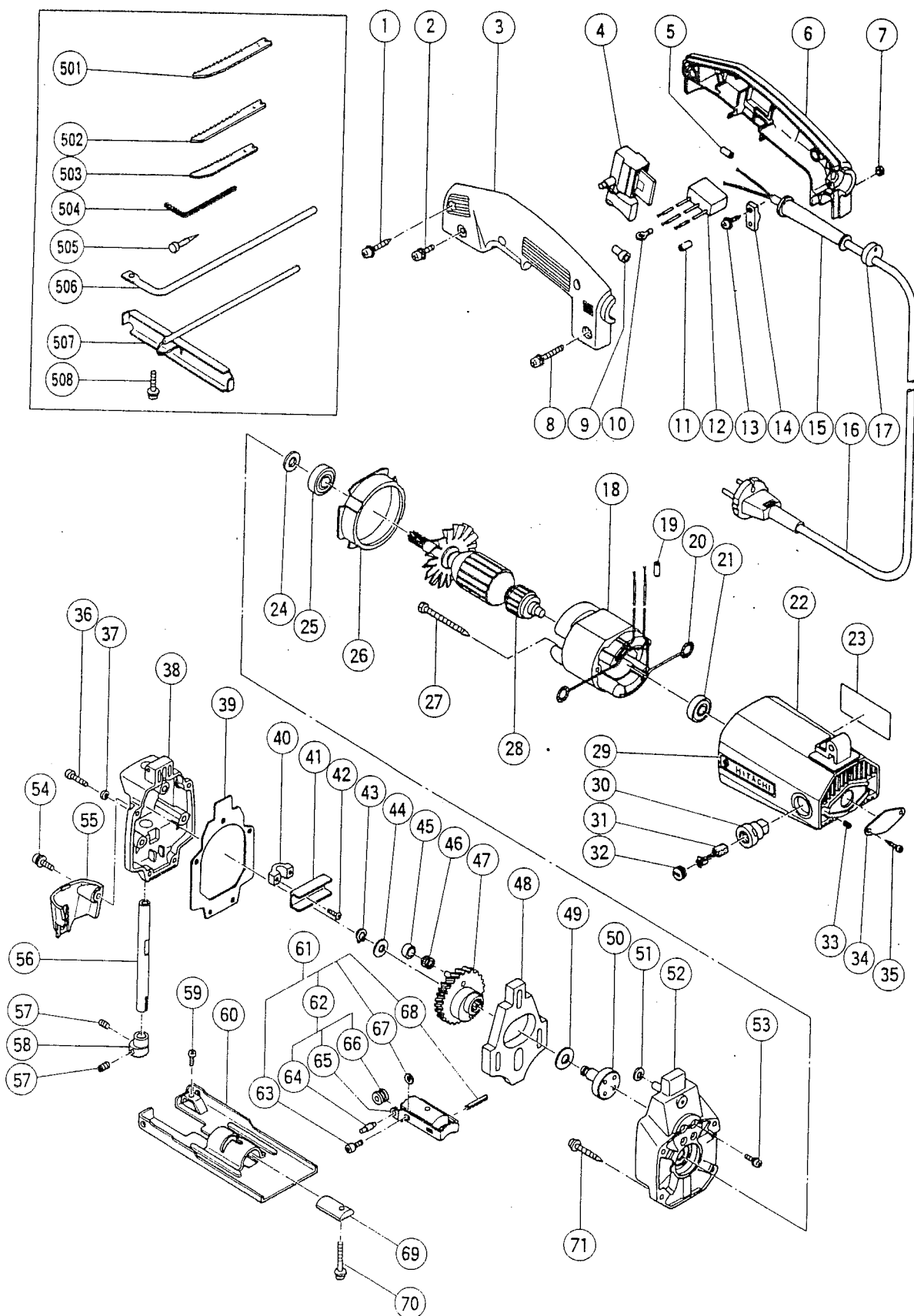


HITACHI

Hitachi Power Tools France S.A.

SCIE SAUTEUSE

CJ-60V



CJ--60V

| POS. | REFERENCES | DESIGNATIONS | CODES |
|------|------------|-----------------------|-------|
| 1 | 982095 | VIS | 202 |
| 2 | 998461 | VIS | 203 |
| 3 | 958352 Z | 1/2 POIGNEE GAUCHE | 211 |
| 4 | 950991 Z | INTERRUPTEUR | 220 |
| 6 | 958351 Z | 1/2 POIGNEE DROITE | 211 |
| 7 | 949555 | ECROU | 201 |
| 8 | 998482 | VIS | 203 |
| 12 | 994273 | CONDENSATEUR | 209 |
| 13 | 984750 | VIS | 203 |
| 14 | 937631 | SERRE CABLE | 201 |
| 15 | 953327 | ENTREE DE CABLE | 203 |
| 16 | 200008 | CABLE | 213 |
| 17 | 940928 | SUPPORT CLE | 203 |
| 18 | 340159 N | INDUCTEUR | 224 |
| 20 | 930630 | RESSORT | 203 |
| 21 | 855284 | ROULEMENT | 211 |
| 22 | 958291 | CARCASSE | 219 |
| 24 | 958246 | JOINT FEUTRE | 203 |
| 25 | 855220 | ROULEMENT | 211 |
| 26 | 958276 | BAFFLE | 203 |
| 27 | 961672 | VIS | 203 |
| 28 | 360126 G | INDUIT | 224 |
| 30 | 937846 | PORTE CHARBON | 206 |
| 31 | 999021 | CHARBON (2) | 207 |
| 32 | 937847 | BOUCHON DE CHARBON | 204 |
| 33 | 963383 | VIS | 201 |
| 34 | 958258 | PLAQUE ARRIERE | 203 |
| 35 | 954017 | VIS | 201 |
| 36 | 949219 | VIS | 201 |
| 37 | 949453 | RONDELLE | 201 |
| 38 | 958253 | COUVERCLE | 217 |
| 39 | 958252 | JOINT | 203 |
| 40 | 958255 | COLLIER | 203 |
| 41 | 940085 | CONNECTEUR | 214 |
| 42 | 958189 | VIS | 201 |
| 43 | 940079 | CIRCLIPS | 202 |
| 44 | 940080 | RONDELLE | 201 |
| 45 | 940916 | CONNECTEUR | 208 |
| 46 | 940917 | ROULEMENT AIGUILLES | 208 |
| 47 | 958250 | ENGRENAGE | 223 |
| 48 | 958251 | LOGEMENT D'EXENTRIQUE | 215 |
| 49 | 957540 | RONDELLE | 201 |
| 50 | 958249 | AXE | 216 |
| 51 | 957585 | RONDELLE | 201 |
| 52 | 958248 | CARTER PIGNON | 217 |
| 53 | 991207 | VIS | 202 |
| 54 | 986348 | VIS | 202 |
| 55 | 962123 | DEFLECTEUR | 214 |
| 56 | 958254 | PLONGEUR | 217 |
| 57 | 958257 | VIS | 201 |
| 58 | 958256 | SERRE LAME | 206 |
| 59 | 949235 | VIS | 201 |

CJ—60V

| POS. | REFERENCES | DESIGNATIONS | CODES |
|-----------------------|------------|--------------------------------------|-------|
| 60 | 963370 | BASE | 206 |
| 61 | 958269 Z | ROULETTE COMPLETE INCLUS JUSQU'AU 68 | 215 |
| 69 | 958262 | BLOCAGE DE BASE | 204 |
| 70 | 958359 | VIS | 203 |
| 71 | 982032 | VIS | 201 |
| A C C E S S O I R E S | | | |
| 504 | 943277 | CLE 6 PANS 3 mm | |
| 505 | 940092 | POINTE DE CENTRAGE | |
| 506 | 963384 | GUIDE CIRCULAIRE | |
| 507 | 957563 | GUIDE PARALLELE | |
| 508 | 963398 | VIS | |

