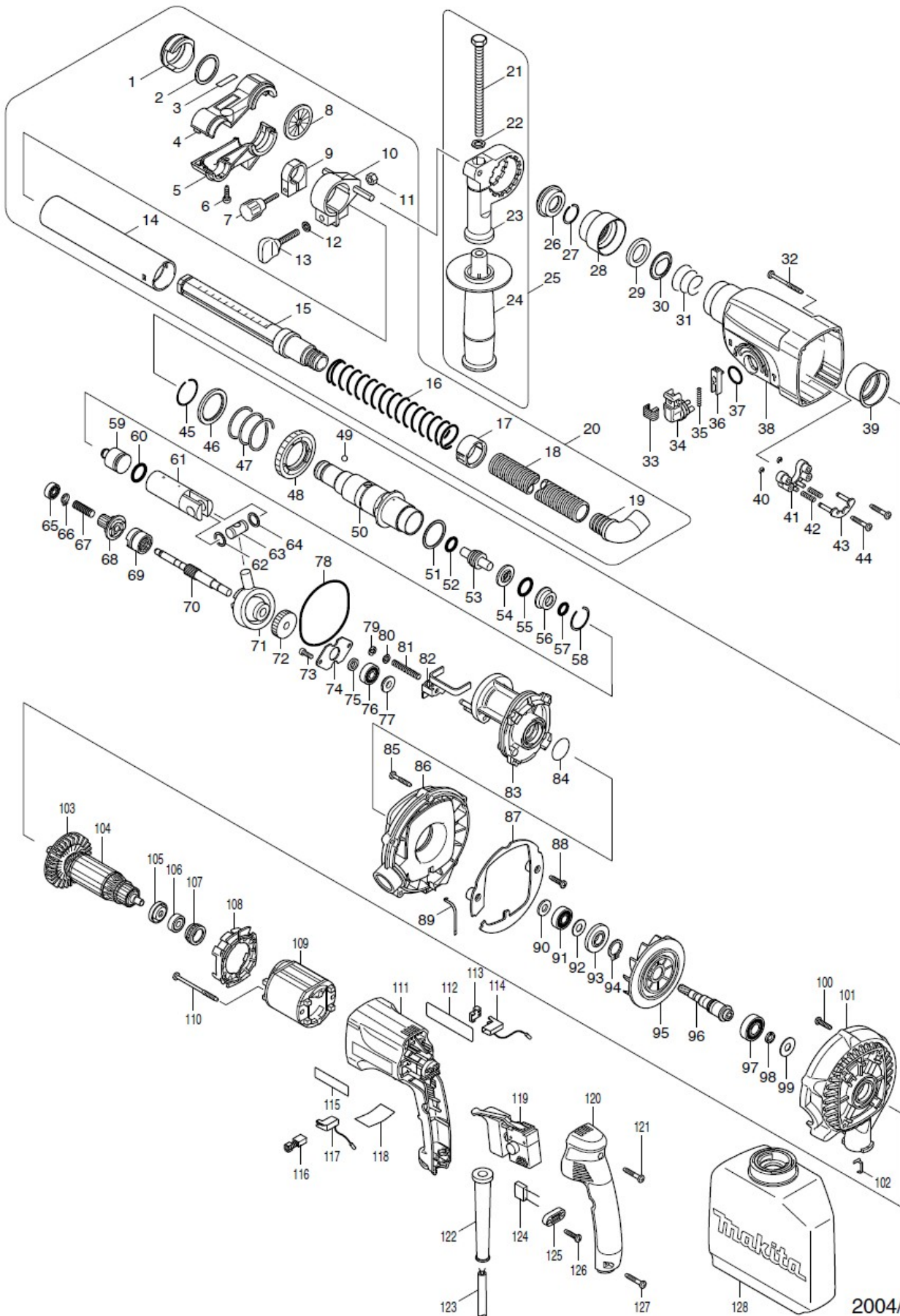


Perfo-Burineur SDS-Plus HR2432



2004/09
HR2432

Perfo-Burineur SDS-Plus HR2432



Item	Parts_No.	Parts_Description	Qty
1	421396-0	FITTING RUBBER	1
2	267091-6	FLAT WASHER 28	1
3	819071-4	MAKITA LABEL	1
4	414799-5	COLLECTOR 25R	1
5	414800-6	COLLECTOR 25L	1
6	265926-5	TAPPING SCREW 4X16	1
7	265706-9	THUMB SCREW M4X24	1
8	421384-7	SEALING CAP 40	1
9	414795-3	STOPPER RING	1
10	417156-6	PIPE HOLDER	1
11	931302-2	HEX. NUT M6	1
12	941151-9	FLAT WASHER 6	1
13	265705-1	THUMB SCREW M6X30	1
14	414797-9	SUPPORT PIPE	1
15	414796-1	SLIDE PIPE	1
16	233015-4	COMPRESSION SPRING 25	1
17	414794-5	SPRING STOPPER	1
18	414898-3	HOSE 19	1
19	417153-2	CUFFS 19-22	1
20	122709-5	DUST COLLECTOR ASS'Y	1
20		INC. 1-19	0
21	921923-8	HEX. BOLT M8X120	1
22	345280-4	HEX. WASHER	1
23	417630-4	GRIP BASE	1
24	152521-9	GRIP 36 COMPLETE	1
024-1	153503-4	GRIP 36 COMPLETE	1
25	134943-5	GRIP 36 ASS'Y	1
25		INC. 21-24	0
025-1	135302-6	GRIP 36 ASS'Y	1
025-1		INC. 21-24	0
26	286263-4	CAP 35	1
27	233915-8	RING SPRING 19	1
027-1	233940-9	RING SPRING 19	1
28	417629-9	CHUCK COVER	1
29	257241-1	RING 21	1
30	345187-4	GUIDE WASHER	1
31	233916-6	CONICAL COMP. SPRING 21-29	1
32	266069-6	TAPPING SCREW 4X45	4
33	417794-4	CAP	1
34	162229-7	CHANGE LEVER COMPLETE	1
35	233341-1	COMPRESSION SPRING 3	1
36	417795-2	LOCK BUTTON	1
37	213278-8	O RING 17	1
38	183441-6	GEAR HOUSING SET	1
38		INC. 39	0
39	153290-5	NEEDLE BEARING COMPLETE	1
40	961017-7	STOP RING E-3	2
41	417796-0	GUIDE BASE	1
42	233344-5	COMPRESSION SPRING 4	2
43	163430-7	LOCK PLATE COMPLETE	1
44	265999-8	TAPPING SCREW 4X25	2
45	233918-2	RING SPRING 28	1
46	267228-5	WASHER 30	1
47	233328-3	COMPRESSION SPRING 31	1
48	227028-5	SPUR GEAR 51	1
49	216022-2	STEEL BALL 7.0	1

Perfo-Burineur SDS-Plus HR2432



50	153365-0	TOOL HOLDER COMPLETE	1
51	267229-3	FLAT WASHER 28	1
52	213128-7	O RING 12	1
53	324396-8	IMPACT BOLT	1
54	324218-2	RING 9	1
55	213232-2	O RING 15	1
56	324216-6	O RING CASE	1
57	213073-6	O RING 9	1
58	233917-4	RING SPRING 28	1
59	324214-0	STRIKER	1
60	213227-5	O RING 16	1
61	331632-5	PISTON CYLINDER	1
62	267104-3	FLAT WASHER 12	1
63	324215-8	PISTON JOINT	1
64	267104-3	FLAT WASHER 12	1
65	211012-0	BALL BEARING 606ZZ	1
66	961003-8	RETAINING RING S-7	1
67	233343-7	COMPRESSION SPRING 7	1
68	226399-7	SPUR GEAR 10	1
69	331634-1	CLUTCH CAM	1
70	324248-3	CAM SHAFT	1
71	219014-0	SWASH BEARING 10	1
72	226550-9	HELICAL GEAR 26	1
73	266273-7	HEX. SOCKET HEAD BOLT M4X12	2
74	345179-3	BEARING RETAINER	1
75	267234-0	FLAT WASHER 8	1
76	211032-4	BALL BEARING 608ZZ	1
77	324212-4	RING 8	1
78	213725-9	O RING 68	1
79	961011-9	STOP RING E-4	1
80	941102-2	FLAT WASHER 5	1
81	233342-9	COMPRESSION SPRING 6	1
82	345363-0	CHANGE PLATE	1
83	153687-8	INNER HOUSING COMPLETE	1
84	213380-7	O RING 24	1
85	265999-8	TAPPING SCREW 4X25	5
86	418807-4	FAN HOUSING A	1
87	418809-0	DUST COVER PLATE	1
88	265995-6	TAPPING SCREW 4X18	2
89	345483-0	EARTH PLATE A	1
90	267271-4	FLAT WASHER 9	1
91	210060-6	BALL BEARING 609LLU	1
92	267231-6	FLAT WASHER 9	1
93	324500-9	DUST GUARD	1
94	961055-9	RETAINING RING S-15	1
95	241668-5	FAN 81	1
96	226596-5	HELICAL GEAR 5	1
096-1	226619-9	HELICAL GEAR 5	1
97	211131-2	BALL BEARING 6001DDW	1
98	262115-3	URETHANE RING 8	1
99	253741-9	FLAT WASHER 9	1
099-1	253733-8	FLAT WASHER 9	1
100	265995-6	TAPPING SCREW 4X18	4
101	418808-2	FAN HOUSING B	1
102	345484-8	EARTH PLATE B	1
103	240047-4	FAN 60	1
103-1	240084-8	FAN 60	1

Perfo-Burineur SDS-Plus HR2432



104	515624-4	ARMATURE ASS'Y 220-240V	1
104		INC. 103105106	0
104-1	515654-5	ARMATURE ASSY 240V	1
104-1		INC. 103105106	0
104-2	515674-9	ARMATURE ASS'Y 240V	1
104-2		INC. 103105106	0
105	681636-0	INSULATION WASHER	1
106	211021-9	BALL BEARING 607LLB	1
107	421494-0	RUBBER RING 19	1
108	417631-2	BAFFLE PLATE	1
108-1	419201-3	BAFFLE PLATE	1
109	633488-5	FIELD 220-240V	1
110	266052-3	TAPPING SCREW 4X60	2
111	183409-2	MOTOR HOUSING	1
111		INC. 115	0
111-1	417632-0	MOTOR HOUSING	1
112	861193-6	HR2432 NAME PLATE	1
113	689111-0	SPACER	2
114	643988-7	BRUSH HOLDER	1
115	819063-3	MAKITA LABEL	1
116	191962-4	CARBON BRUSH CB-419	1
117	643989-5	BRUSH HOLDER	1
118	815991-0	HR2432 SERIAL NO. LABEL	1
119	650508-0	SWITCH TG813TLB-1	1
120	153284-0	HANDLE COVER COMPLETE	1
121	265999-8	TAPPING SCREW 4X25	1
122	682566-8	CORD GUARD 10	1
123	665890-4	POWER SUPPLY CORD 1.0-2-4.0	1
124	645253-0	NOISE SUPPRESSOR	1
125	687052-4	STRAIN RELIEF	1
126	265995-6	TAPPING SCREW 4X18	2
127	265999-8	TAPPING SCREW 4X25	2
128	122708-7	DUST BAG ASS'Y	1
128	410602-8	FASTENER	1
128	417154-0	FRAME CAP	1
129	257273-8	RING 8	1
A01	824729-2	PLASTIC CARRYING CASE	1
A01	163455-1	LATCH	2
A01	418889-6	HANDLE	1
A01	819140-1	MAKITA LOGO LABEL	1
A01-1	824729-2	PLASTIC CARRYING CASE	1
A01-1	163455-1	LATCH	2
A01-1	419360-3	HANDLE	1
A01-1	819140-1	MAKITA LOGO LABEL	1
A02	421727-3	CAP	1
E01	688131-1	LINE FILTER	1